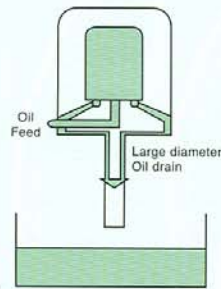


Installation

Fitting a
MANN+HUMMEL
Centrifuge

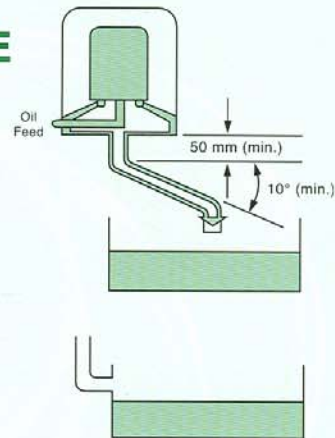
**“A centrifuge is not a normal filter,
it needs a larger oil return pipe”.**



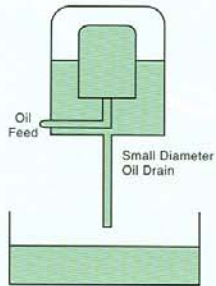
ACCEPTABLE



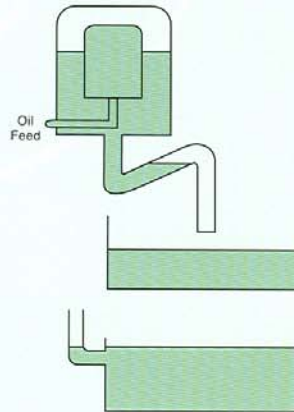
Large diameter oil return pipe means the oil
will drain and the rotor will be free to turn



NOT ACCEPTABLE



Small diameter oil return pipe will prevent oil from
draining from the centrifuge and will stop it working

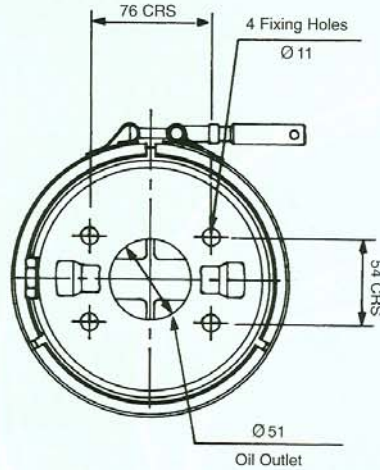


*Note: Some models are available with air assisted
drains to allow them to be installed without the need
for a large diameter oil return pipe.*

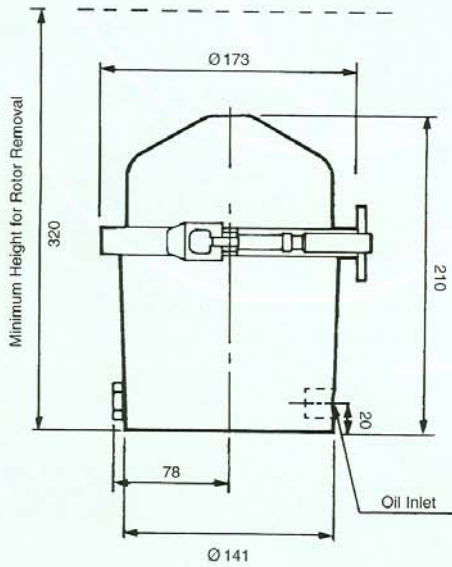
MANN+HUMMEL (UK) LTD
OIL CONDITIONING SYSTEMS
Units 11-15, Chard Business Park,
Leach Road, Chard, Somerset, TA20 1FA, UK
Tel: +44 (0)1460-238900 Fax: +44 (0)1460-238997
Web Site: www.mann-hummel.com
E-mail: ocs@mann-hummel.com

MANN+HUMMEL FILTER TECHNOLOGY
(S.E.A.) PTE LTD
3 Toh Tuck Link,
#03-02/03 German District Centre,
Singapore 596228.
Tel: (65) 6586 8181 Fax: (65) 6586 8180
E-mail: mhsg@mann-hummel.com.sg

FM090 CENTRIFUGE



All measurements are in mm unless otherwise stated



FM090

Type	Part No.	Oil Inlet Thread	C.O.V. Rating, bar
090-31	01421A	3/8" B.S.P.	1.3



- Suitable for system capacity from 15 to 90 litres
- Rotor dirt capacity 0.9 litres
- Rotor oil capacity 1.125 litres
- Minimum oil feed pipe size 9.5mm internal diameter
- Minimum oil drain pipe size 38mm internal diameter
- This model is available with a cleanable rotor, and is supplied with paper insert 33301A to improve serviceability
- Other features can be included to suit specific customer requirements
- The net weight of the FM090 is 3.5kg

Performance Curves

PERFORMANCE CURVES
Typical rotor performance for SAE 30 OIL @ 100°C

